

## Möllers Group – Special Retrofit Solutions

Retrofit-offer for all installed  
machines with obsolete operator panels  
(OP17 / OP177(B) / PC 670 / PC 677)



## Retrofit-offer for all installed machines with obsolete operator panels (OP17 / OP177(B) / PC 670 / PC 677)

The HMI - Human Machine Interface - should be particularly simple to use as a man-machine interface and offer optimal applications. The development team of the Möllers Group is meeting increasing technical complexity with clear operability and modern diagnostic tools: Bundled in a current panel generation which is now available as part of a retrofit.



### Our recommendation: Latest panel generation instead of obsolete panels

As part of a retrofit offensive, we recommend replacing the panels of the plant completely or step by step with up-to-date panels in order to be able to produce securely at maximum capacity using state-of-the-art technology.



### Task: Greater availability and improved visualization of your system

The new panel generation offers a number of convincing advantages and added security:

With options in sizes of 9", 12" or even 19", the operability is significantly improved.

Self-explanatory icons and graphic representations enable intuitive operation.



### Our retrofit-offer for maximum reliability

As part of a retrofit, panels are reprogrammed for your machine 1: 1 by our service team. In a further stage, functions such as maintenance intervals depending on production output, maintenance, and spare parts lists or status messages for valves, motors, etc., can be added via additional programming functions. Of course, individual requirements can be taken into account as part of the reprogramming.

The panels are available from stock - so that in addition to replacement parts, delivery and complete exchange can be implemented at short notice.

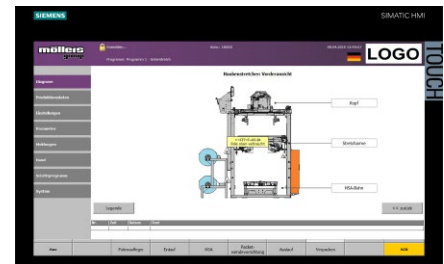


### Optimal cost control – concrete savings potential

The Möllers Service Team would be glad to make you an individual offer tailored to your plant.

We are looking forward to your inquiry!

» More diagnosis tools  
and convenient  
operation  
for increase  
in availability



» Bedienpanel der aktuellen Generation

### Your contact person



Michael Jungilligens

Fon +49 2521 88-444

spares@moellers.com

### Publisher

Maschinenfabrik Möllers GmbH  
Sudhoferweg 93-97  
59269 Beckum

Fon +49 2521 88-0

Fax +49 2521 88-100

info@moellersgroup.com

www.moellersgroup.com



Inferior Court:  
Münster  
HRB7676  
VAT-ID.No.:  
DE 218694419  
CEO: Jörg Freyer